

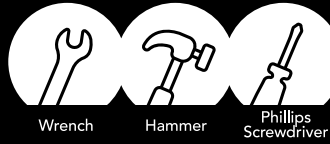
Schylling

# BIG WHEEL®

THE ORIGINAL

## Chopper

Tools Needed:



Assembly Instructions

Scan to follow online



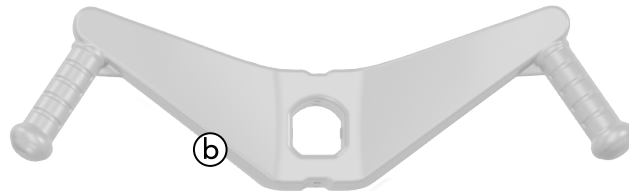
Thanks for your purchase - get ready for the ride of your life! If you have any issues with the assembly of your Big Wheel please reach out to our team online or via our toll-free number:



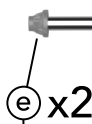
[www.Big-Wheel.com](http://www.Big-Wheel.com) | 800-541-2929



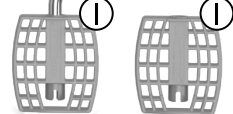
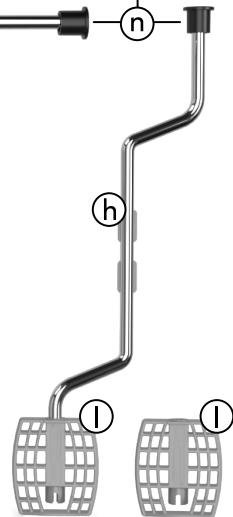
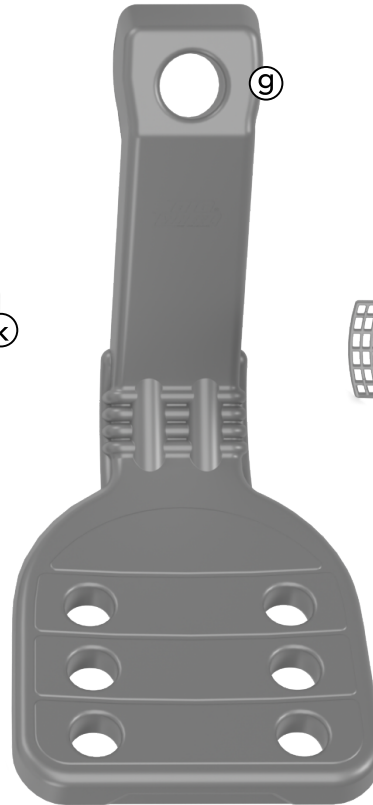
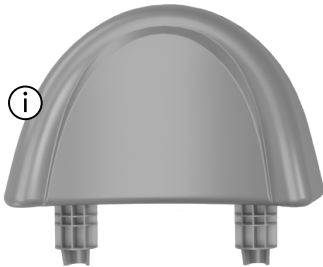
AGES  
3+



Remove Protective Endcap Tools (n)



Part (e) Zoom View



Weight Limit: 70lbs | Min Height: 36in



### WARNING: TO AVOID SERIOUS INJURY:

ADULT SUPERVISION REQUIRED. NEVER USE NEAR MOTOR VEHICLES. NEVER USE NEAR STREETS, SWIMMING POOLS, HILLS, STEPS OR SLOPED DRIVEWAYS. ALWAYS WEAR SHOES WHEN USING THIS PRODUCT. NEVER ALLOW MORE THAN 1 RIDER. RIDER'S HEIGHT SHOULD NOT BE SHORTER THAN 36 INCHES. RIDER'S WEIGHT SHOULD NOT EXCEED 70 LBS. CHECK PRODUCT REGULARLY FOR EXCESSIVE WEAR OR DAMAGE. IF PRODUCT IS DAMAGED, DISCARD IMMEDIATELY. ALWAYS WEAR A PROPERLY FITTED HELMET THAT COMPLIES WITH U.S. CONSUMER PRODUCT SAFETY COMMISSION (CPSC) STANDARDS. 16 CFR 1203. (HELMET NOT INCLUDED).



### WARNING: ADULT ASSEMBLY REQUIRED-

CHOKING HAZARD TO CHILDREN UNDER THE AGE OF 3 YEARS - CONTAINS SMALL PARTS PRIOR TO ASSEMBLY. PRODUCT CONTAINS SMALL PARTS WITH POTENTIALLY SHARP POINTS AND EDGES. KEEP AWAY FROM CHILDREN PRIOR TO ASSEMBLY. CONFORMS TO SAFETY REQUIREMENTS OF ASTM F963 AND ANSI Z315.1. HAMMER, PHILLIPS HEAD SCREWDRIVER AND PLIERS REQUIRED FOR ASSEMBLY. (NOT INCLUDED).

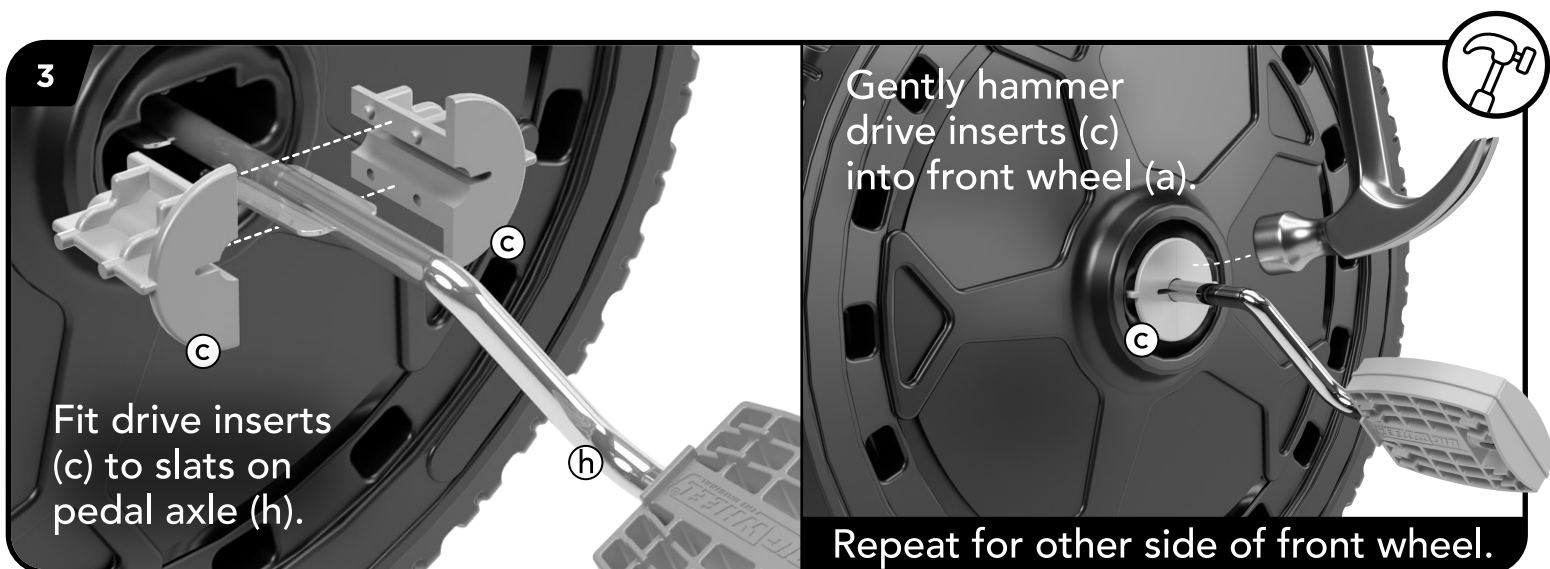
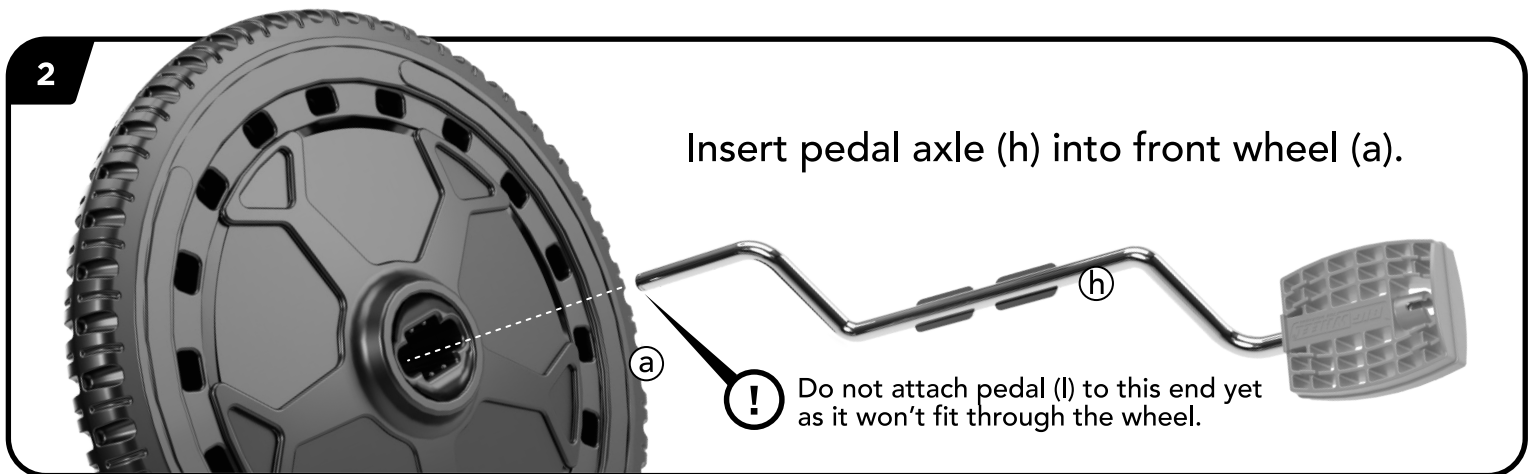
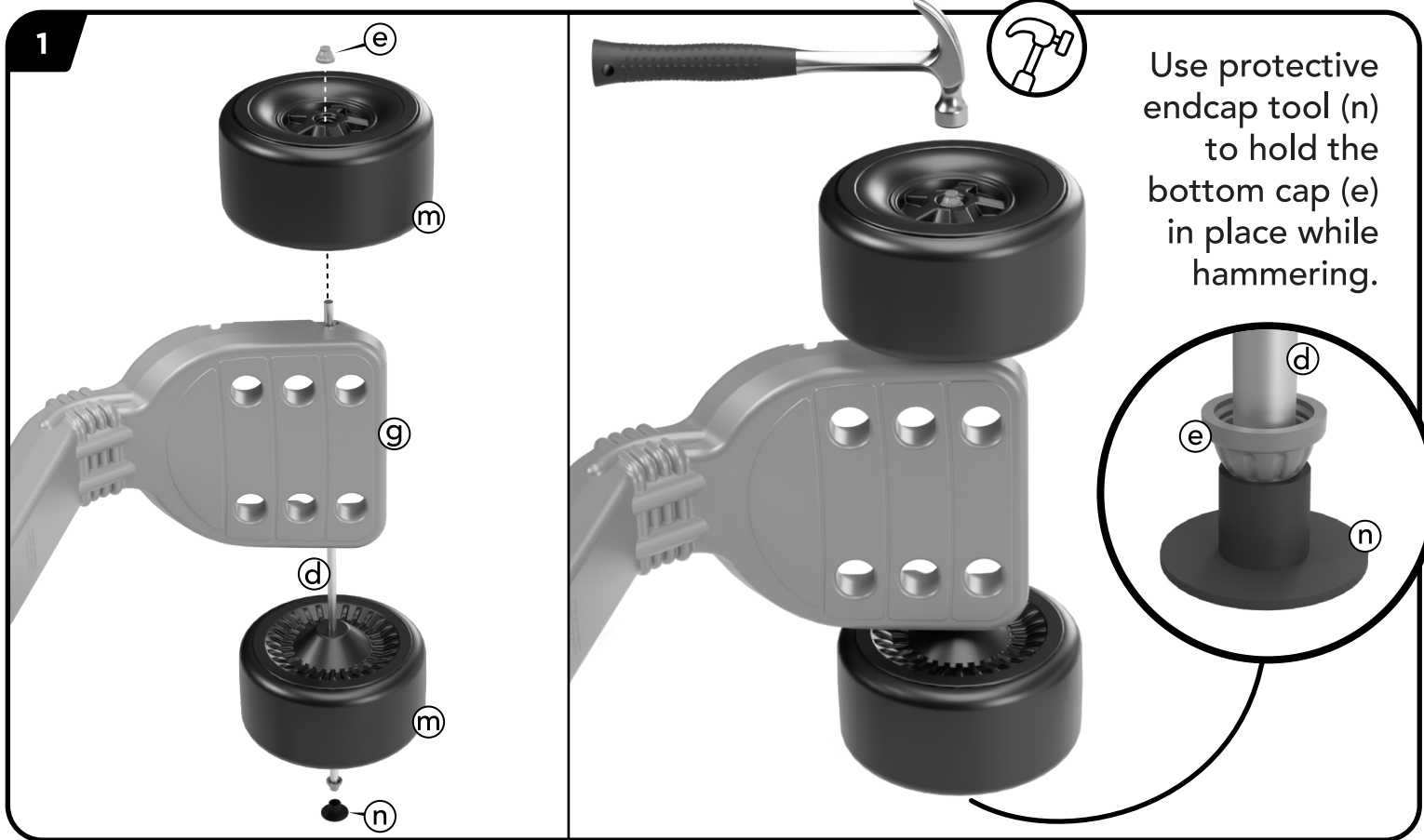


### WARNING: CHOKING HAZARD-

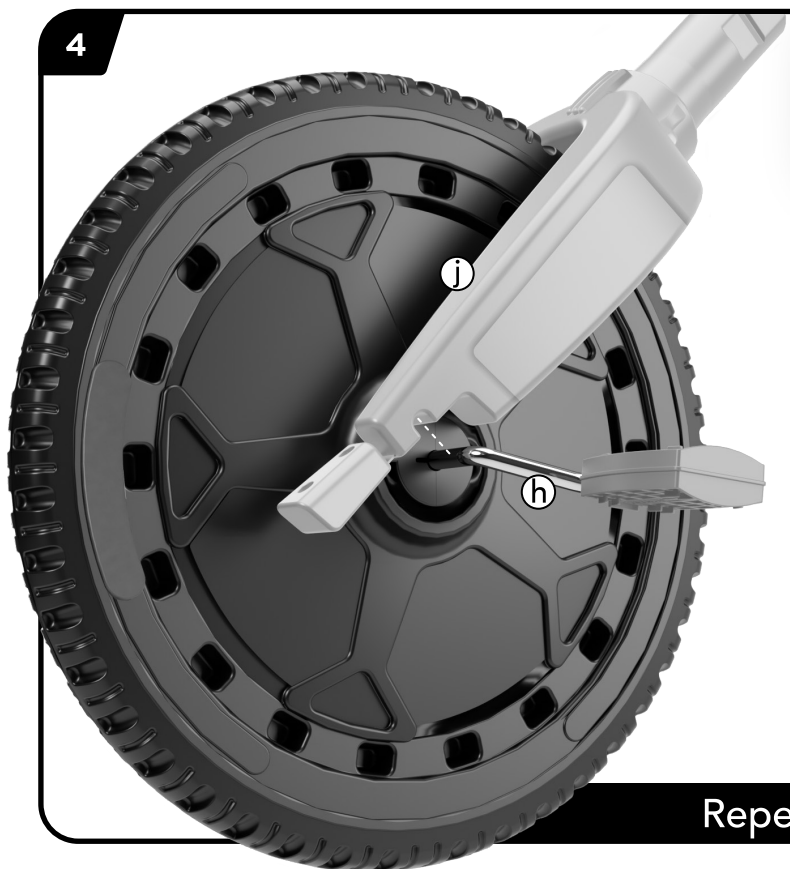
SMALL PARTS. NOT FOR CHILDREN UNDER 3 YEARS.

THE TOY SHOULD BE USED WITH CAUTION SINCE SKILL IS REQUIRED TO AVOID FALLS OR COLLISIONS CAUSING INJURY TO THE USER OR THIRD PARTIES.

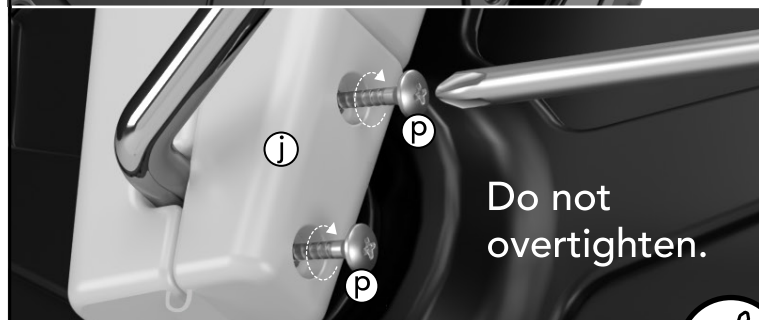
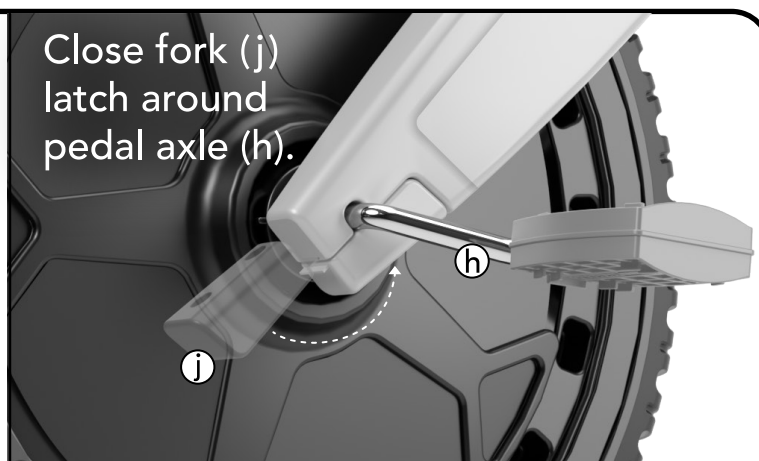
Big Wheel® is a trademark of Schylling Inc. ©2024. All Rights Reserved.



4



Close fork (j)  
latch around  
pedal axle (h).



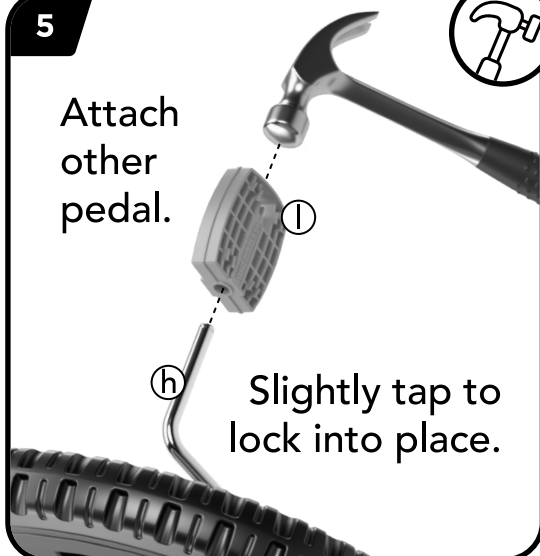
Do not  
overtighten.

Repeat for other side of fork.



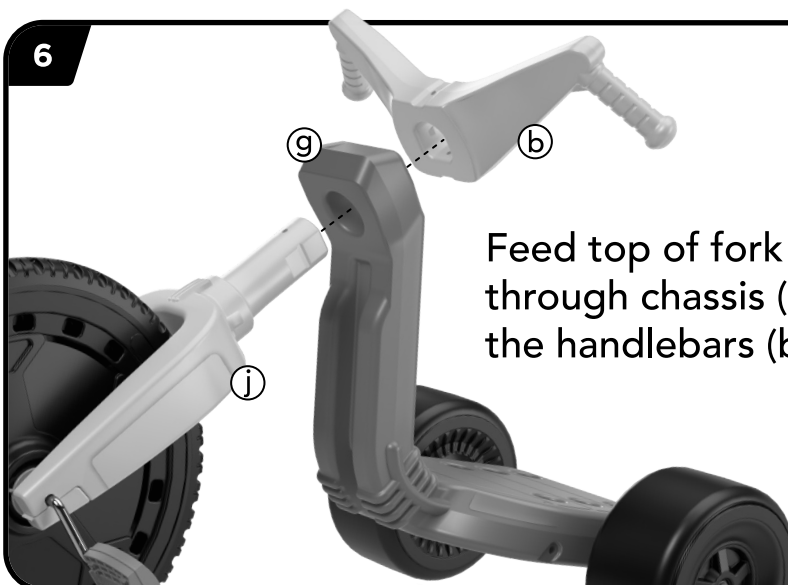
5

Attach  
other  
pedal.



Slightly tap to  
lock into place.

6



Feed top of fork (j)  
through chassis (g) into  
the handlebars (b).

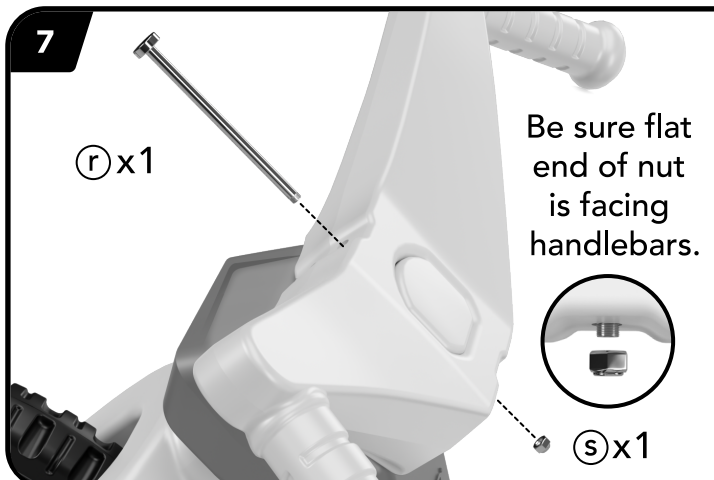
7

(r) x1

Be sure flat  
end of nut  
is facing  
handlebars.



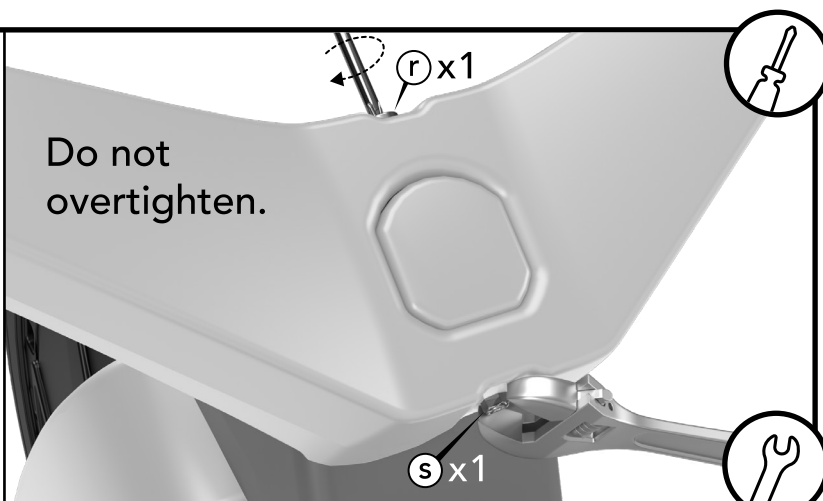
(s) x1



Do not  
overtighten.

(r) x1

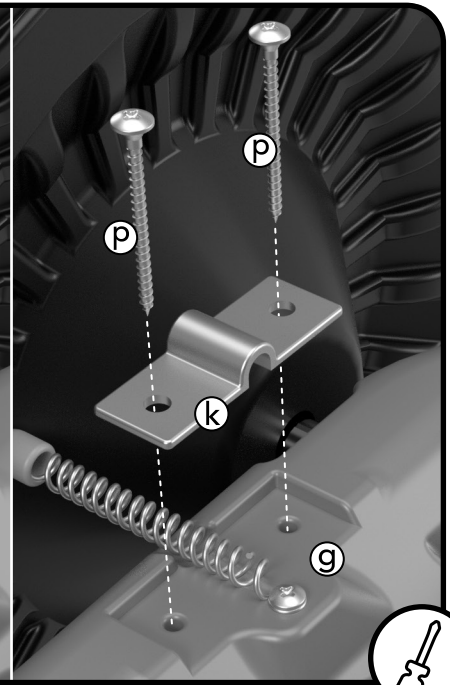
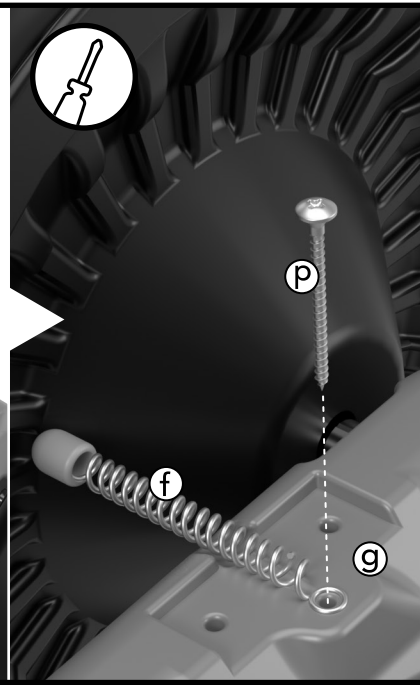
(s) x1





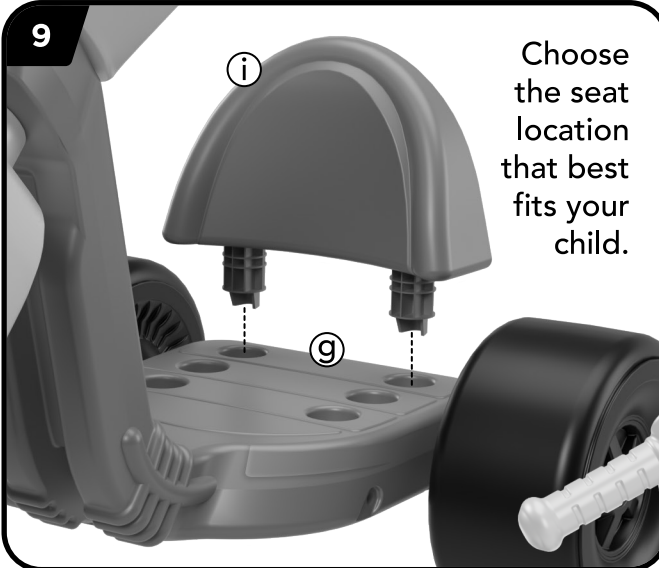
8

Turn bike over to attach clicker (f) to bottom of chassis.



9

Choose the seat location that best fits your child.



## Sticker Placement:



**TIP:** Rub the wide, flat end of an Endcap Tool (n) over the stickers as you apply them to the Big Wheel. This will help press and flatten the stickers to ensure maximum adhesion.

**BIG WHEEL** x 2

**BIG WHEEL**  
x 2

**BIG WHEEL**  
THE ORIGINAL  
x 2

x 10

